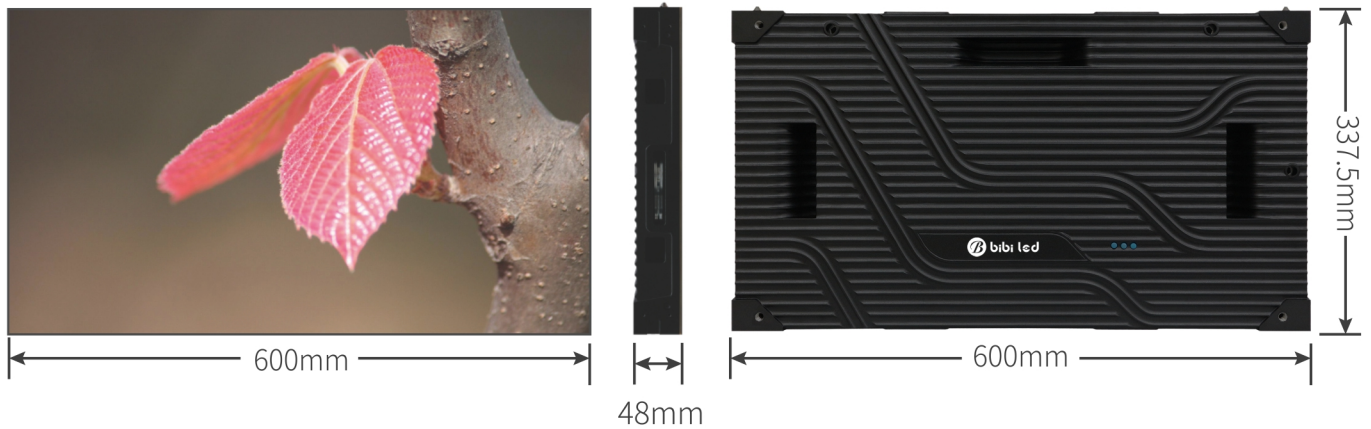




**S16** / SERIES

**Small Pixel Pitch**

LED Display



## Parameters

SPECIFICATION					
Item(Indoor)	P0.9375	P1.25	P1.5625	P1.875	P2.08
Pixel pitch	0.9375 mm	1.25 mm	P1.5625 mm	P1.875 mm	P2.08 mm
LED type	Mini	SMD 3 in 1	SMD 3 in 1	SMD 3 in 1	SMD 3 in 1
Pixel density	1137778 pixels/m <sup>2</sup>	640000 pixels/m <sup>2</sup>	409600 pixels/m <sup>2</sup>	284444 pixels/m <sup>2</sup>	230400 pixels/m <sup>2</sup>
Pixel configuration	4R4G4B	1R1G1B	1R1G1B	1R1G1B	1R1G1B
Module dimension(WxH)	150x168.75mm	150x168.75mm	150x168.75mm	150x337.5mm	150x337.5mm
Module resolution	160x180	120x135	96x108	80x180	72x162
Cabinet dimension(WxHxD)	600x337.5x48mm	600x337.5x48mm	600x337.5x48mm	600x337.5x48mm	600x337.5x48mm
Cabinet resolution	640x360	480x270	384x216	320x180	288x162
Cabinet weight	7KG				
Cabinet material	Die-casting aluminum				
Maintenance way	Front/Rear				
Dual power and signal backup	Optional				
Brightness	700 ~ 1000				
Gray scale	14~16				
Colour temperature	3200~9300				
Refresh rate	3840				
Contrast ratio	5000 : 1				
Power supply	100~240V				
Storage temp	-20°C ~ +60°C				
Operation temp	-20°C ~ +50°C				
Operation humidity	5%~95%RH				
Input signal	DVI / VGA, RGBHV Composite Video signal , S-VIDEO YPbPr(HDTV)				
Driving method	1/30 dynamic	1/27 dynamic	1/27 dynamic	1/30 dynamic	1/27 dynamic
Max. Power consumption	800W/m <sup>2</sup>	800W/m <sup>2</sup>	800W/m <sup>2</sup>	800W/m <sup>2</sup>	800W/m <sup>2</sup>
Avg. Power consumption	200W/m <sup>2</sup>	200W/m <sup>2</sup>	200W/m <sup>2</sup>	200W/m <sup>2</sup>	200W/m <sup>2</sup>





## S16/SERIES

### High-end Small Pixel Pitch LED Display

S16 series small pixel pitch LED display was born to replace LCD Video Wall, it is more suitable for indoor high-end commercial applications. It provides better colors and visual experience with gapfree.

#### Features



16:9  
perfect ratio



Slim and  
light weight



Front  
access



Perfect visual  
performance



Whisper-quiet  
operation



High  
gray scale



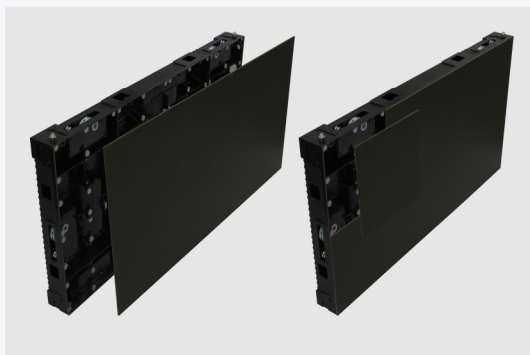
## 16:9 perfect ratio

The cabinet size is 600x337.5mm and can be perfectly proportioned to achieve 2K, 4K, 8K, 16K, uncompressed for Super viewing performance.



## Slim and light weight

A single cabinet weighs only 7kg and is only 48mm thick, greatly reducing the load on the wall and can be mounted directly on the wall. Easy and fast.



## Front access, effortless service

All cabinet components accessible from the front with the magnetic tool supplied to ensure efficient maintenance.





## Perfect visual performance

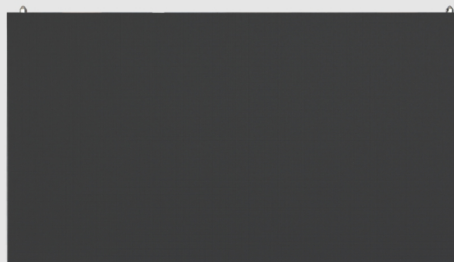
3840mm refresh, full series of standard MBI5153IC, 160 degrees of non-dead-angle viewing experience, 5000:1 high contrast ratio, 65536 grayscale rating, perfect to present the high-end small pitch standard.



## Whisper-quiet operation

Fanless design, energy efficient IC and low heat conduction delivers a super-silent LED display.

Small Pixel Pitch **S16**



## Optional upgrade dual power signal backup system

High system stability, 100,000 hours trouble-free operation.

LED Screen Manufacturer in China



[www.bibiled.com](http://www.bibiled.com)



**SHENZHEN BIBI LED CO LTD**

Mob: +86 153 9990 6913

Web: [www.bibiled.com](http://www.bibiled.com)

E-mail: [info@bibiled.com](mailto:info@bibiled.com)

Address:

The Building C, Tangtou Industrial Park,  
Shiyan Town, Baoan District, Shenzhen.